

# GO RHINO!

## PRODUCTS®

### DOMINATOR

### D2

#### INSTALLATION INSTRUCTIONS

PART NO. D24505B, D24505PS / 2007-2012 JEEP WRANGLER 4 DOOR

Do not attempt to install this product on any vehicle other than the one it is designed for and listed above!

#### PACKING LIST

**REV 5/12**

<u>QTY</u>	<u>PART DESCRIPTION</u>	<u>QTY</u>	<u>PART DESCRIPTION</u>
12	1/4" X 1" HEX BOLTS	4	5/16" U-NUTS
24	1/4" FLAT WASHERS	4	8M X 25M HEX BOLTS
12	1/4" LOCK WASHERS	4	45052 FRONT & CENTER BRACKETS DRIVER & PASSENGER
12	1/4" HEX NUTS	2	45053 REAR BRACKET DRIVER & PASSENGER
16	5/16" X 1" HEX BOLTS	1	D24505D DRIVER SIDE STEP
18	5/16" LOCK WASHERS	1	D24505P PASSENGER SIDE STEP
30	5/16" FLAT WASHERS		
12	5/16" HEX NUTS		

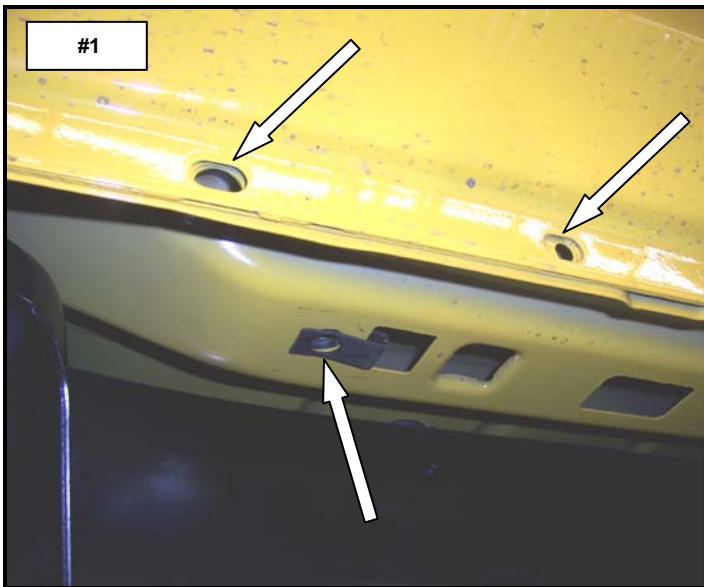
#### INSTALLATION INSTRUCTIONS

READ THE INSTRUCTIONS COMPLETELY BEFORE YOU BEGIN THE INSTALLATION.

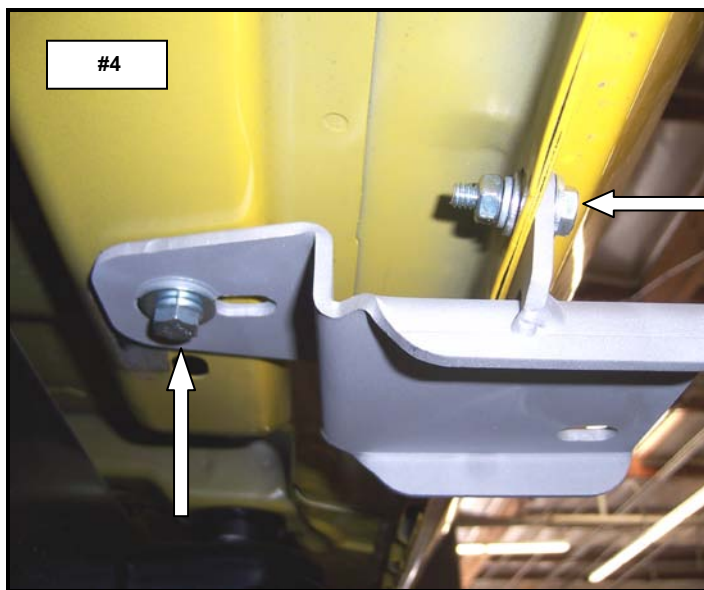
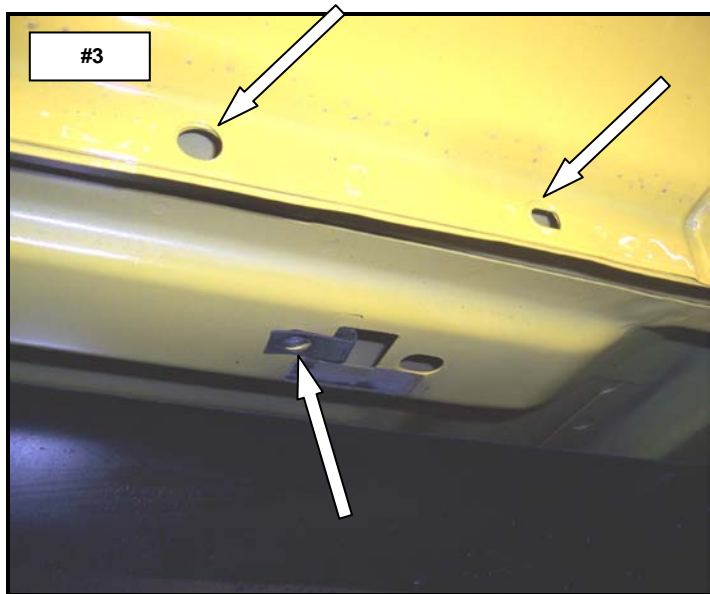
IF THE VEHICLE IS EQUIPPED WITH FACTORY SLIDER BARS, REMOVE THE FASTENERS, BRACKETS AND SLIDER BARS FROM THE VEHICLE.

**STEP 1.** THIS INSTALLATION USES (3) MOUNTING BRACKETS PER SIDE. BEGIN BY INSTALLING THE DRIVER SIDE FRONT BRACKET. LOCATE THE HOLES IN THE BODY PINCH MOLD AND IN THE UNDER SIDE OF THE BODY. REMOVE THE BLACK TAPE COVERING THE ROUND HOLE IN THE BODY AND INSTALL (1) 5/16" U-NUT AS SHOWN. **PHOTO #1**

**STEP 2.** ATTACH (1) 45052 MOUNTING BRACKET TO THE PINCH MOLD USING (2) 1/4" X 1" HEX BOLTS, FLAT WASHERS, LOCK WASHERS, HEX NUTS AND TO THE BODY USING (1) 5/16" X 1" HEX BOLT, LOCK WASHER AND FLAT WASHER. DO NOT TIGHTEN. **PHOTO #2**

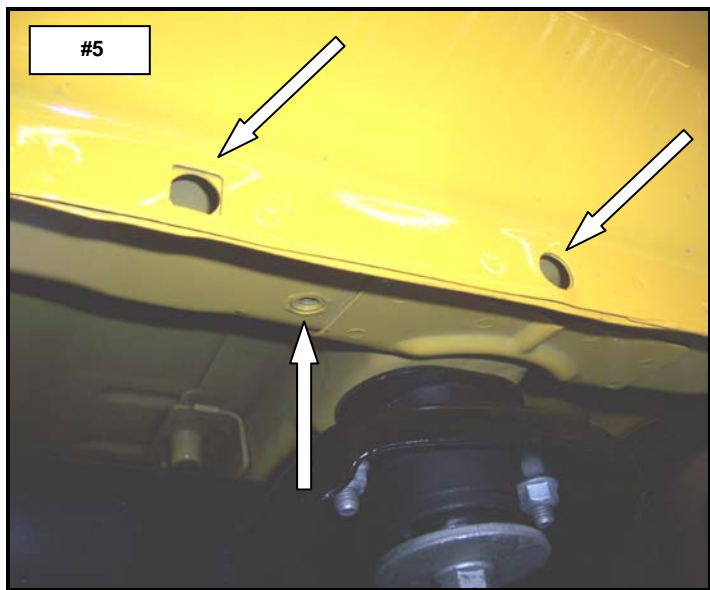


**STEP 3.** REPEAT THE ABOVE PROCEDURE TO INSTALL (1) 45052 MOUNTING BRACKETS AT THE CENTER POSITION. DO NOT TIGHTEN. **PHOTO #3 & PHOTO #4**



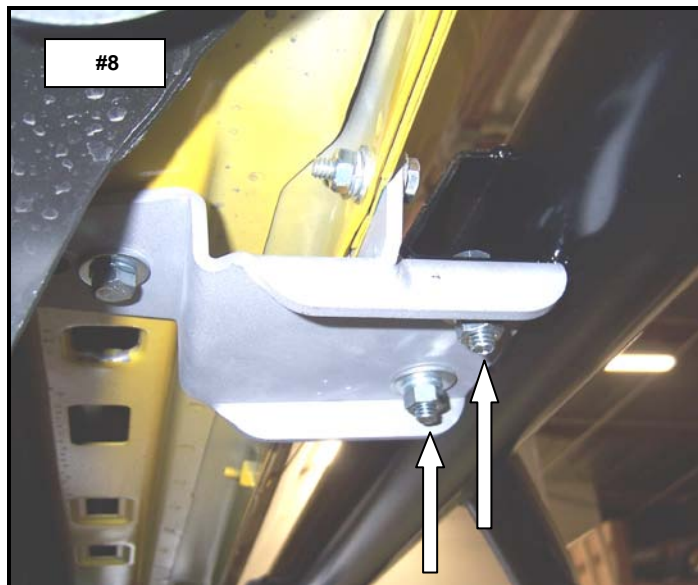
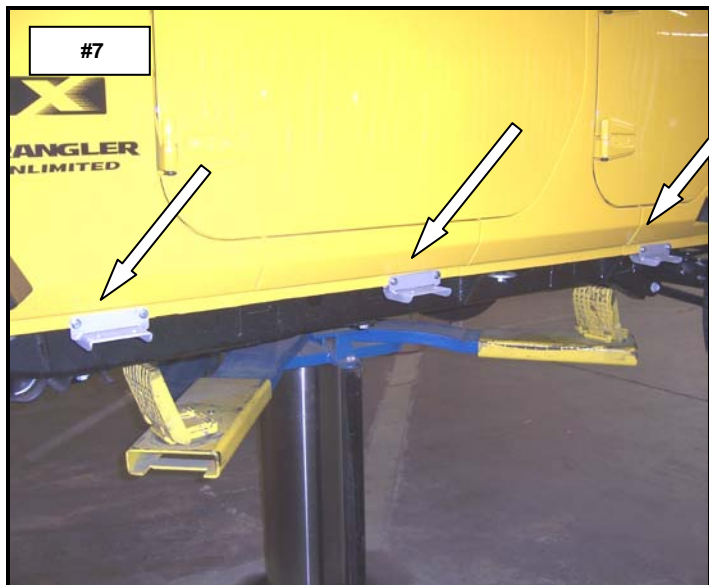
**STEP 4.** LOCATE THE HOLES IN THE BODY PINCH MOLD AND REMOVE THE TAPE COVERING THE THREADED HOLE IN THE UNDER SIDE OF THE BODY AT THE REAR OF THE VEHICLE. **PHOTO #5**

**STEP 5.** ATTACH (1) 45053 MOUNTING BRACKET TO THE PINCH MOLD USING (2) 1/4" X 1 HEX BOLTS, FLAT WASHERS, LOCK WASHERS, HEX NUTS AND TO THE BODY USING (1) 8M X 25M HEX BOLT, 5/16" LOCK WASHER AND 5/16" FLAT WASHER. DO NOT TIGHTEN. **PHOTO #6**



INSTALLED MOUNTING BRACKETS DRIVER SIDE. **PHOTO #7**

**STEP 7.** ATTACH D24505D DRIVER SIDE STEP TO EACH OF THE MOUNTING BRACKETS USING (2) 5/16" X 1" HEX BOLTS, (4) FLAT WASHERS, (2) LOCK WASHERS AND (2) HEX NUTS. **PHOTO #8**



**STEP 8.** ALIGN THE SIDE STEP WITH THE VEHICLE AND TIGHTEN ALL MOUNTING BRACKET AND SIDE STEP NUTS AND BOLTS.

REPEAT THE ABOVE PROCEEDURE TO INSTALL THE PASSENGER SIDE BRACKETS AND SIDE STEP.





## Dominator II (one piece)

- Application specific installation brackets make for faster, easier installation
- Patented step and mounting system allow easier, safer entry and exit
- No drilling required on most models and body lift kit compatible
- Cab length
- 2" round bars with aluminum step pads
- Will ship UPS
- Available in black powder coat finish with a limited 5-year warranty
- Polished stainless steel with a limited lifetime warranty
- U.S. Patent No. 6,588,783 - 6,874,801 and other patents pending

Warranty: Go Rhino! Products® warrants its products to be free from defects in materials and workmanship. This limited warranty extends for 5 years/50,000 miles (whichever comes first) for black, 5 years/50,000 miles (whichever comes first) for chrome and a limited lifetime for polished stainless from the date of purchase for parts purchased after April 2004. Warranty claims must be accompanied with original invoice and photos. It is the customer's responsibility to protect the finish with regular applications of a nonabrasive polish that is compatible with the product's finish. This warranty covers the cost of the product only and does not include the cost of removal, installation or shipping. This warranty is void if the product shows signs of alteration, misuse, mishandling, improper care, neglect, improper application, and/or damages improper installation. This warranty provides a one-time replacement on workmanship if all of the above conditions are met.

Liability: Go Rhino! Products® Grille and Brush Guards are designed to enhance the styling of the vehicle only; they are not intended as collision protection bumpers. Go Rhino! Products'® liability is limited to the repair or replacement of the defective part(s) made by GoRhino! products®. The item(s) will be subjected to inspection by Go Rhino! Products®. Part(s) that in our opinion were damaged by incorrect fitting, neglect or improper use will not be replaced or repaired. Go Rhino! Products® reserves the right to change specifications, terms, conditions and prices of items shown in this catalog without notice.

**Please do not return this product to place of purchase.**

**If you have defective, missing or damaged parts or need assistance, please contact *Go Rhino Products* for fast, friendly customer service at: 1-888-427-4466 or email:**

**[warranty@gorhino.com](mailto:warranty@gorhino.com)**