

INSTALLATION INSTRUCTIONS

DOMINATOR II SERIES SIDE STEPS PART NUMBER D24107 (B-PS)
2010-12 DODGE RAM 2500HD, 3500HD MEGA CAB P/U 4DR 2/4WD

Do not attempt to install this product on any vehicle other than the one it is designed for and listed above!

PACKING LIST

Rev 3-12

QTY PART DESCRIPTION

24	3/8" X 1 1/4" HEX BOLTS
42	3/8" FLAT WASHERS
30	3/8" LOCK WASHERS
18	3/8" HEX NUTS

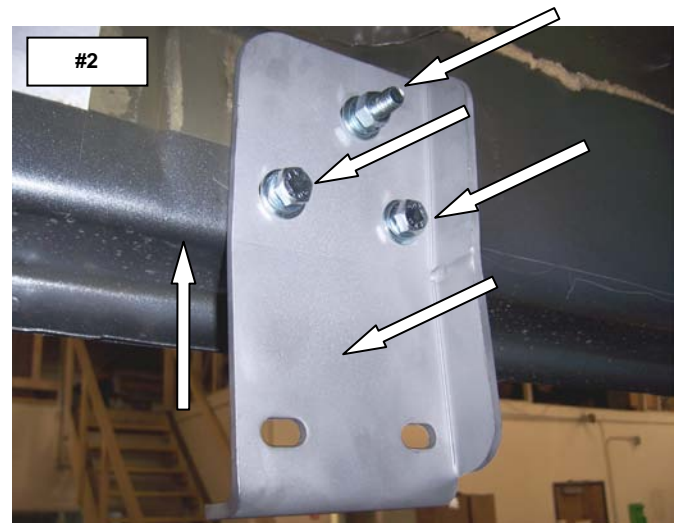
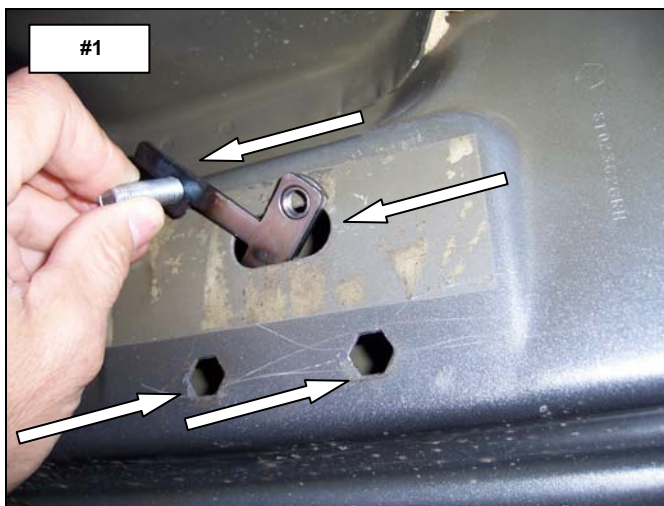
QTY PART DESCRIPTION

6	4105TP T-PLATE
6	D06 SIDE STEP MOUNTING BRACKETS
1	D24107P PASSENGER SIDE STEP
1	D24107D DRIVER SIDE STEP

INSTALLATION INSTRUCTIONS

READ THE INSTRUCTIONS COMPLETELY BEFORE YOU BEGIN THE INSTALLATION

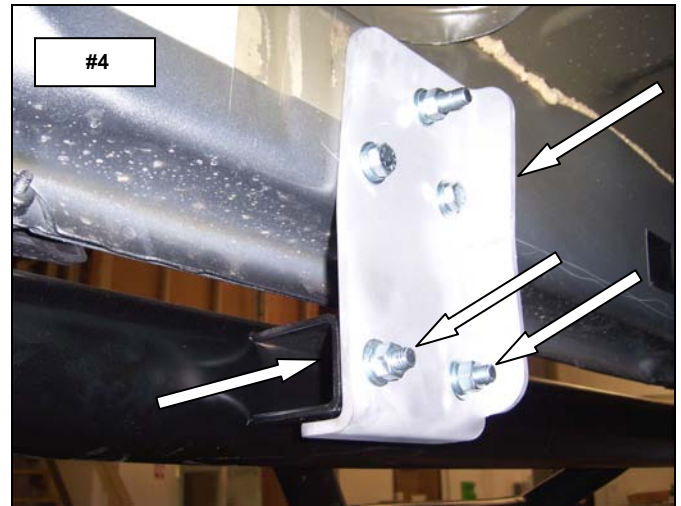
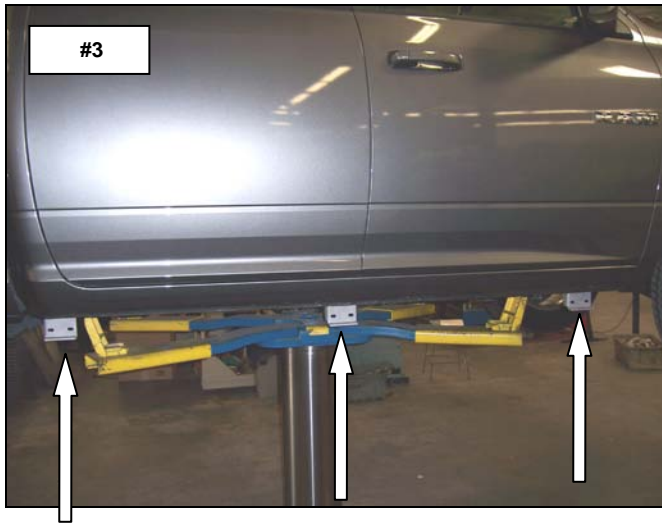
STEP-1 THIS INSTALLATION USES (3) MOUNTING BRACKETS PER SIDE. BEGIN BY INSTALLING THE SIDE STEP MOUNTING BRACKETS ON THE PASSENGER SIDE OF THE VEHICLE. LOCATE THE (2) HEXAGON SHAPED AND OBLONG HOLE IN THE BODY ROCKER PANEL AT THE FRONT OF THE CAB AND REMOVE THE TAPE COVERING THE OBLONG HOLE. INSERT (1) OF THE T-PLATES THROUGH THE OBLONG HOLE IN THE ROCKER PANEL AND POSITION THE PLATE INSIDE THE ROCKER PANEL AS SHOWN. **PHOTO #1**



STEP-2 ATTACH ONE OF THE MOUNTING BRACKETS TO THE BODY PANEL USING THE T-PLATE (2) 3/8" X 1 1/4" HEX BOLTS, (3) 3/8" FLAT WASHERS, (3) 3/8" LOCK WASHERS AND (1) 3/8" HEX NUT. HAND TIGHTEN. REPEAT THE ABOVE PROCEDURE TO INSTALL THE CENTER AND REAR MOUNTING BRACKETS.

PHOTO'S #2 & #3

STEP-3 ATTACH THE PASSENGER SIDE STEP TO EACH OF THE MOUNTING BRACKETS USING (2) 3/8" X 1 1/4" HEX BOLTS, (4) FLAT WASHERS, (2) LOCK WASHERS AND (2) HEX NUTS. **PHOTO #4**



STEP-4 ALIGN THE SIDE STEP WITH THE VEHICLE AND TIGHTEN ALL MOUNTING BRACKET AND SIDE STEP NUTS AND BOLTS. REPEAT THE ABOVE PROCESS TO INSTALL THE DRIVER SIDE BRACKETS AND SIDE STEP.



Features and Benefits:

Dominator II (one piece)

- Application specific installation brackets make for faster, easier installation
- Patented step and mounting system allow easier, safer entry and exit
- No drilling required on most models and body lift kit compatible
- Cab length
- 2" round bars with aluminum step pads
- Will ship UPS

- Available in black powder coat finish with a limited 5-year warranty
- Polished stainless steel with a limited lifetime warranty
- U.S. Patent No. 6,588,783 - 6,874,801 and other patents pending

Warranty: Go Rhino! Products® warrants its products to be free from defects in materials and workmanship. This limited warranty extends for 5 years/50,000 miles (whichever comes first) for black, 5 years/50,000 miles (whichever comes first) for chrome and a limited lifetime for polished stainless from the date of purchase for parts purchased after April 2004. Warranty claims must be accompanied with original invoice and photos. It is the customer's responsibility to protect the finish with regular applications of a nonabrasive polish that is compatible with the product's finish. This warranty covers the cost of the product only and does not include the cost of removal, installation or shipping. This warranty is void if the product shows signs of alteration, misuse, mishandling, improper care, neglect, improper application, and/or damages improper installation. This warranty provides a one-time replacement on workmanship if all of the above conditions are met.

Liability: Go Rhino! Products® Grille and Brush Guards are designed to enhance the styling of the vehicle only; they are not intended as collision protection bumpers. Go Rhino! Products'® liability is limited to the repair or replacement of the defective part(s) made by GoRhino! products®. The item(s) will be subjected to inspection by Go Rhino! Products®. Part(s) that in our opinion were damaged by incorrect fitting, neglect or improper use will not be replaced or repaired. Go Rhino! Products® reserves the right to change specifications, terms, conditions and prices of items shown in this catalog without notice.

**Please do not return this product to
place of purchase.**

**If you have defective, missing or damaged parts
or need assistance, please contact *Go Rhino
Products* for fast, friendly customer service at:**

**1-888-427-4466 or email:
warranty@gorhino.com**