



**PRODUCTS®**

**DOMINATOR**

**D2**

REV 3-12

**INSTALLATION INSTRUCTIONS**

**DOMINATOR II Series SideSteps Part Number D24051 (B-PS)**

**2011-12 Chevrolet Silverado / GMC Sierra 2500HD, 3500HD Crew Cab P/U 2/4WD (Diesel)**

Do not attempt to install this product on any vehicle other than the one it is designed for and listed above!

**Parts List**

<b><u>Qty</u></b>	<b><u>Part Description</u></b>	<b><u>Qty</u></b>	<b><u>Part Description</u></b>
1	8mm x 25mm Hex Bolt	25	3/8" Flat Washer
10	5/16" U-Nut	13	3/8" Hex Nut
10	5/16" x 1" Hex Bolt	1	C0912 Passenger Front Bracket
11	5/16" Flat Washer	2	C0922 Passenger Center & Rear Bracket
11	5/16" Lock Washer	3	C0921 Driver Front, Center & Rear Bracket
1	3/8" T-Bolt	1	Vinyl Gasket
12	3/8" x 1 1/4" Hex Bolt	1	D24050P Passenger Side Step
13	3/8" Lock Washer	1	D24050D Driver Side Step

**Tool Required:**

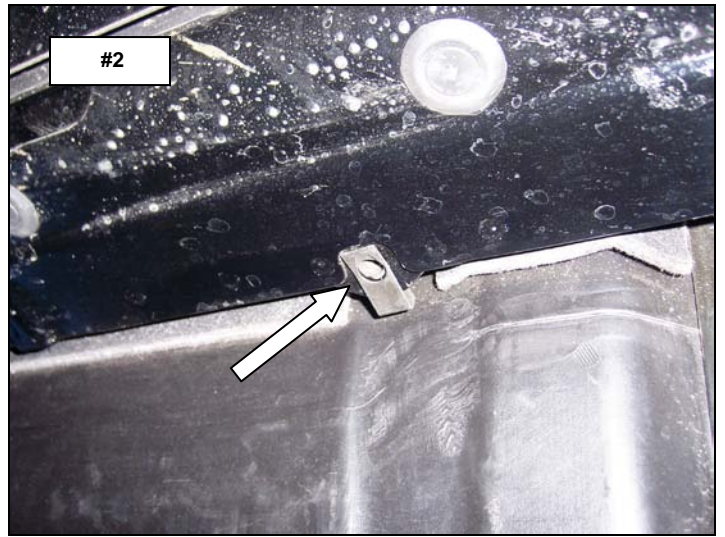
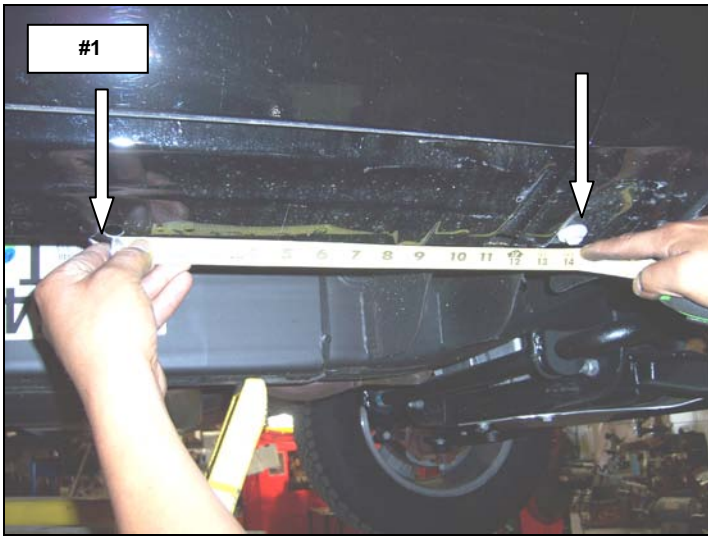
- 1/2", 9/16" & 13mm Socket
- 1/2", 9/16" & 13mm Wrench
- 3/16" Hex Key
- Ratchet & Ratchet Extension

**Approximate installation time: 45min**

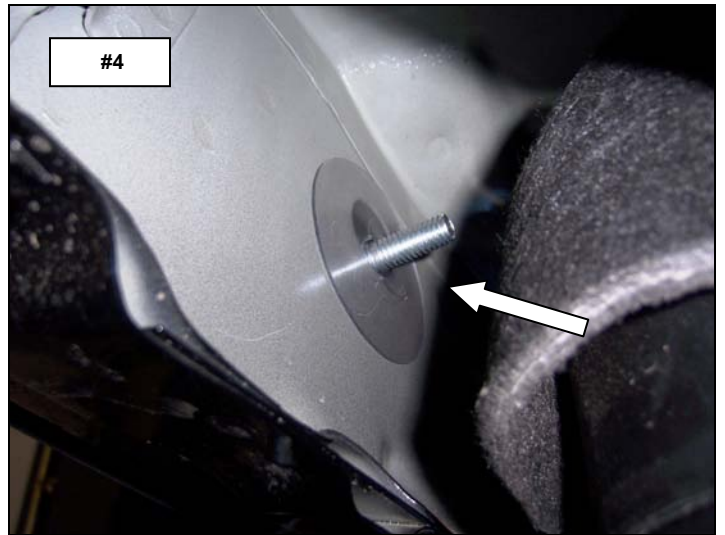
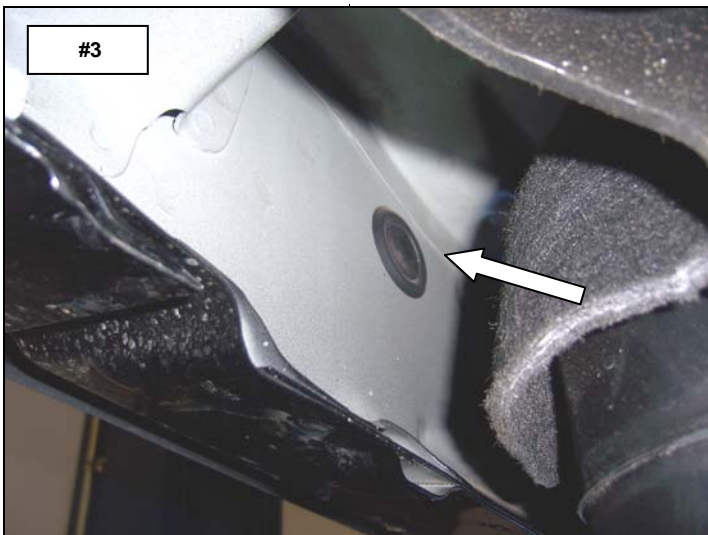
**Installation**

**Read the installation instructions completely and verify that all of the parts listed are accounted for.**

**Step-1** This installation uses three mounting brackets per side. Begin by installing the passenger side front bracket. Measure from the front fender bolt rearward approximately 14", locate the hole in the body pinch mold and install (1) 5/16" U-Nut as shown. **Photo #1 & #2**



**Step-2** Locate in front of the urea tank the plastic plug in the body rocker panel. Remove the plug, Install the vinyl gasket over the threads of the 3/8" T-Bolt and install T-Bolt in the rocker panel as shown. **Photo #3 & #4**



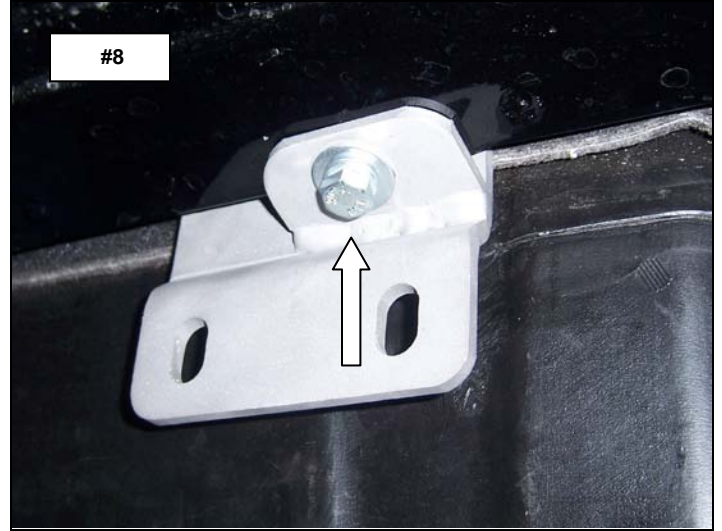
**Step-3** From the front of the urea tank, position the front mounting bracket between the tank and the body pinch mold. Slide the bracket rearward and align the holes in the bracket with the T-Bolt and U-Nut. **Photo #5 & #6**



**Step-4** Position the hole in the front of the bracket over the T-Bolt and install (1) 3/8" flat washer, (1) 3/8" lock washer and (1) 3/8" hex nut. Align the hole in the flange of the bracket with the U-Nut and install (1) 5/16" flat



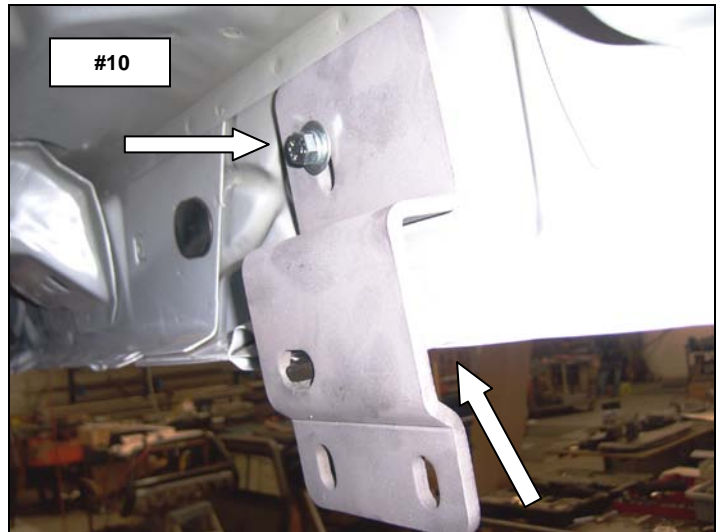
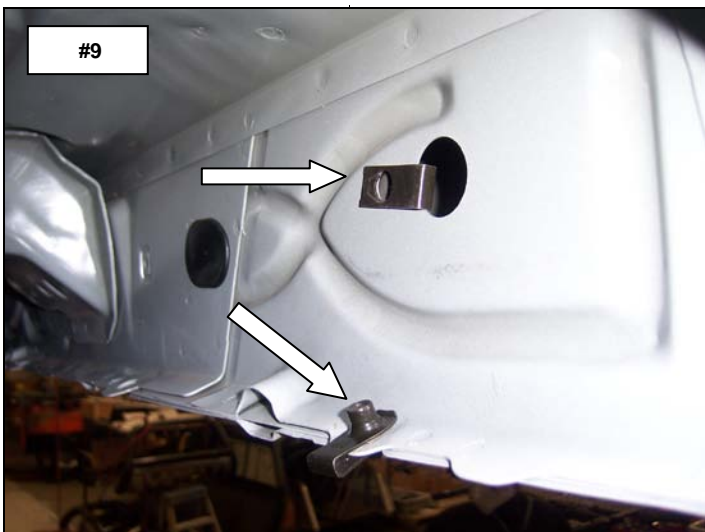
washer, (1) 5/16" lock washer and (1) 5/16" x 1" hex bolt. Leave the nut and bolt loose for final adjustment. **Photo #7 & #8**



**Step-5** Passenger side Center bracket installation.

Measure from the front fender bolt reward approximately 58 7/8" and locate the hole in the body pinch mold and the plastic plug in the rocker panel. Remove the plastic plug from the rocker panel and install 5/16" U-Nuts in the rocker panel and pinch mold. Attach one of the C0922 brackets to the rocker panel and pinch mold using the (2) 5/16" x 1" hex bolts, (2) 5/16" lock washers and (2) 5/16" flat washers. Leave the bolts loose for final adjustment.

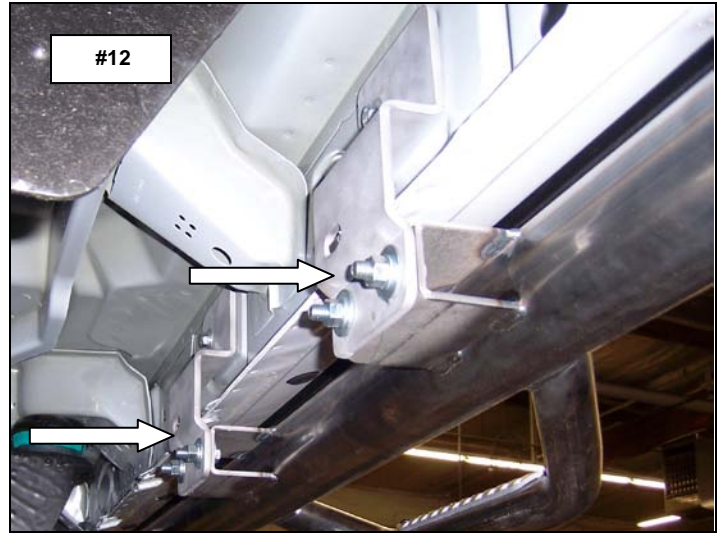
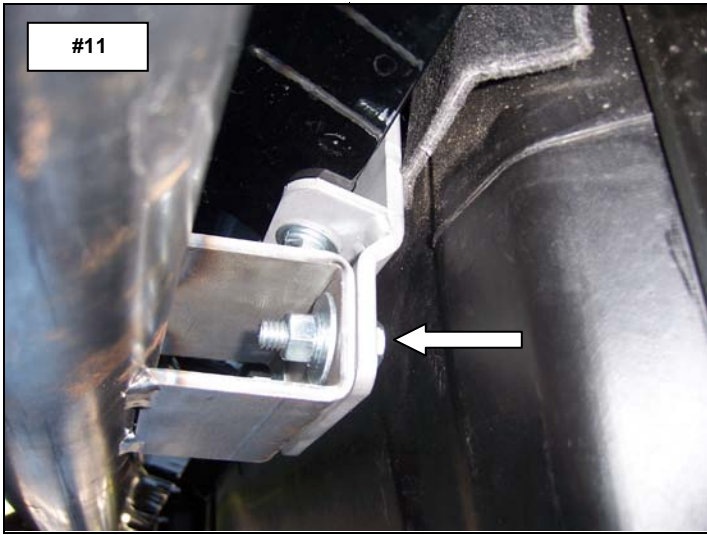
**Photo #9 & #10**



**Step-6** Passenger side rear bracket installation.

Measure from the front fender bolt reward approximately 75 1/8" and repeat step 5 to install the remaining C0922 bracket.

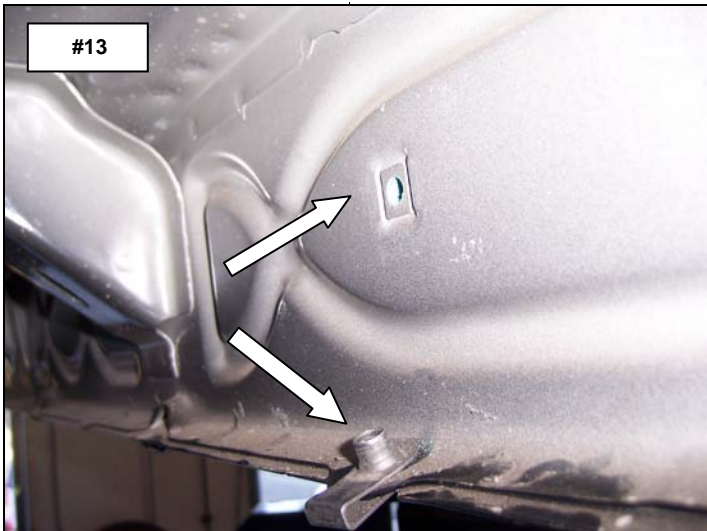
**Step-7** Attach the passenger side step to the front bracket **Photo #11** and to the center and rear bracket **Photo#12** using (2) 3/8" x 1 1/4" hex bolts, (4) 3/8" flat washers, (2) 3/8" lock washers and (2) 3/8" hex nuts for each bracket.



**Step-8** Align the side step with the vehicle and tighten all nuts and bolts.

**Step-9** Driver side front bracket installation.

Measure rearward from the front fender bolt approximately 14" and locate the hole in the body pinch mold and the 8mm threaded insert spot welded in the rocker panel. install a 5/16" U-Nut in the pinch mold and attach one of the C0921 brackets to the rocker panel using (1) 8mm x 25mm hex bolt, (1) 5/16" lock washer and (1) 5/16" flat washer and to the pinch mold using the (1) 5/16" x 1" hex bolt, (1) 5/16" lock washer and (1) 5/16" flat washer. Leave the bolts loose for final adjustment. **Photo #13 & #14**



**Step-10** Driver side center and rear brackets.

Repeat step 5, 6 & 7 to install the driver side center bracket, rear bracket and side step. Align the side step with the vehicle and tighten all nuts and bolts.

**Remember to check and retighten all nuts and bolts periodically.**



## Features and Benefits:

### Dominator II (one piece)

- Application specific installation brackets make for faster, easier installation
- Patented step and mounting system allow easier, safer entry and exit
- No drilling required on most models and body lift kit compatible
- Cab length
- 2" round bars with aluminum step pads
- Will ship UPS
- Available in black powder coat finish with a limited 5-year warranty
- Polished stainless steel with a limited lifetime warranty
- U.S. Patent No. 6,588,783 - 6,874,801 and other patents pending

Warranty: Go Rhino! Products® warrants its products to be free from defects in materials and workmanship. This limited warranty extends for 5 years/50,000 miles (whichever comes first) for black, 5 years/50,000 miles (whichever comes first) for chrome and a limited lifetime for polished stainless from the date of purchase for parts purchased after April 2004. Warranty claims must be accompanied with original invoice and photos. It is the customer's responsibility to protect the finish with regular applications of a nonabrasive polish that is compatible with the product's finish. This warranty covers the cost of the product only and does not include the cost of removal, installation or shipping. This warranty is void if the product shows signs of alteration, misuse, mishandling, improper care, neglect, improper application, and/or damages improper installation. This warranty provides a one-time replacement on workmanship if all of the above conditions are met.

Liability: Go Rhino! Products® Grille and Brush Guards are designed to enhance the styling of the vehicle only; they are not intended as collision protection bumpers. Go Rhino! Products® liability is limited to the repair or replacement of the defective part(s) made by GoRhino! Products®. The item(s) will be subjected to inspection by Go Rhino! Products®. Part(s) that in our opinion were damaged by incorrect fitting, neglect or improper use will not be replaced or repaired. Go Rhino! Products® reserves the right to change specifications, terms, conditions and prices of items shown in this catalog without notice.

**Please do not return this product to place of purchase.**

**If you have defective, missing or damaged parts or need assistance, please contact *Go Rhino Products* for fast, friendly customer service at: 1-888-427-4466 or email: [warranty@gorhino.com](mailto:warranty@gorhino.com)**