

Installation Instructions
Dominator 2 Side Steps Part # D24043 (B-PS)
2014-2015 Chevrolet Silverado & GMC Sierra 1500 Double Cab
2015 Chevrolet Silverado & GMC Sierra 2500HD, 3500HD Double Cab
Do not attempt to install this product on any vehicle other than the one listed above!

Parts List

Qty.	Part #	Description	Torque
1	3	C0751	Driver Side Bracket
2	3	C0752	Passenger Side Bracket
3	12		M8-1.25 x 25mm Hex Bolt 15 Ft. Lbs.
4	6		M8-1.25 Hex Nut
5	6		M8-1.25 U-Nut
6	18		5/16" Flat Washer
7	12		5/16" Lock Washer
8	12		3/8"-16 x 1-1/4" Hex Bolt 30 Ft. Lbs.
9	12		3/8" Hex Nut
10	24		3/8" Flat Washer
11	12		3/8" Lock Washer
12	1	D24043D	Driver Side Step
13	1	D24043P	Passenger Side Step

#1
Driver Side



#2
Passenger Side



Tool Required:

13mm & 9/16" Socket
13mm & 9/16" Wrench
Ratchet & Ratchet Extension
Tape Rule

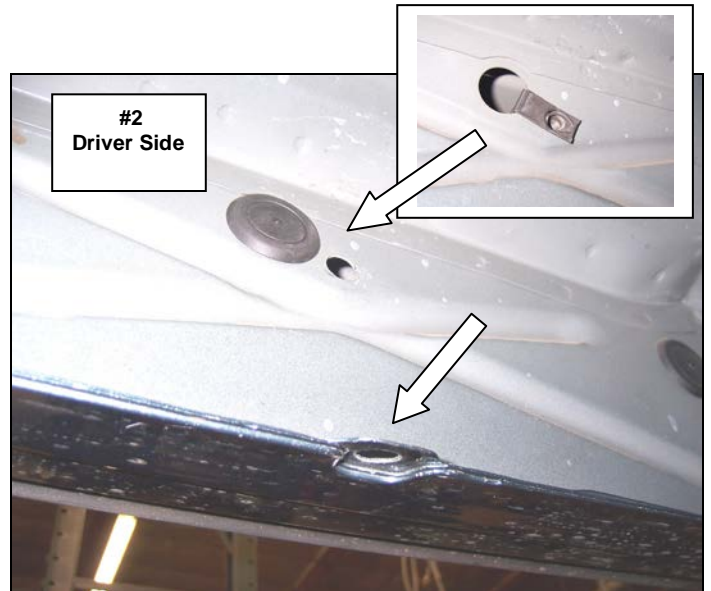
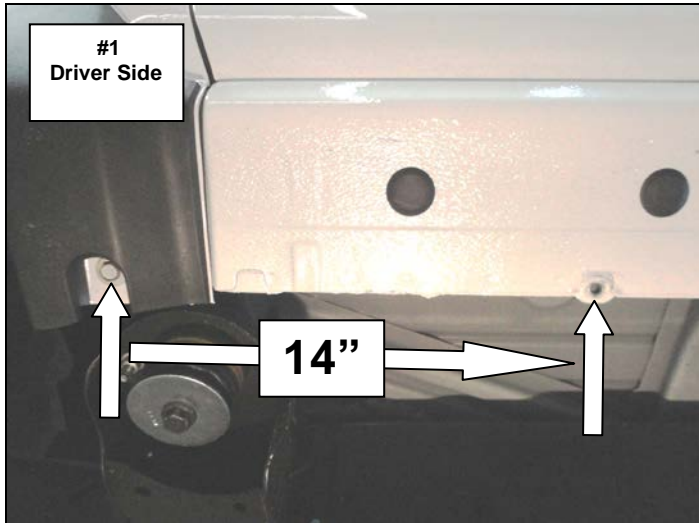
Approximate installation time: 60 min

Read the installation instructions completely and verify that all of the parts listed are accounted for. If you have defective, missing or damaged parts or need assistance, please contact *Go Rhino Products* for fast, friendly customer service at: 1-888-427-4466 or email: warranty@gorhino.com

Installation

This installation uses three brackets per side. Begin by installing the driver side front bracket.

Step-1 Measure from the front fender bolt rearward approximately 14", (**Photo 1**) and locate the hole in the body pinch mold and the plastic plug in the rocker panel, (**Photo 2**). Remove the plastic plug from the rocker panel and install (1) M8 U-Nut in the rocker panel, (**Photo 2**).



Step-2 Attach one of the driver side brackets to the rocker panel using the U-Nut, (1) M8 hex bolt, (1) 5/16" lock washer and (1) 5/16" flat washer, and to the pinch mold using (1) M8 hex bolt, (2) 5/16" flat washers, (1) 5/16" lock washer, and (1) M8 hex nut. Leave the nut and bolts loose for final adjustment, (**Photo 3**).



Step-3 Locate the hole in the body pinch mold and the plastic plug in the rocker panel for the center and rear mounting brackets. Measure rearward from the front fender bolt approximately 49 5/8" for the center and 67" for the rear bracket. Repeat **Step 2** to install the center and rear brackets.

Step-4 Attach the driver side step to each bracket using (2) 3/8" x 1 1/4" hex bolts, (4) 3/8" flat washers, (2) 3/8" lock washers and (2) 3/8" hex nuts, (**Photo 9 & 10**).

Step -5 Align the side step with the vehicle and tighten all bracket and side step nuts and bolts, (**Photo 11**). Repeat the above steps to install the driver side brackets and side step. Remember to check and retighten the nuts and bolts every six months.

