

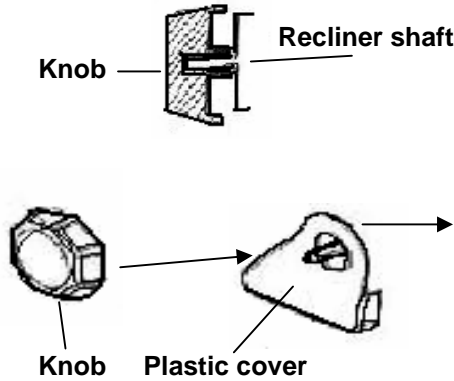


Suspension seat (13406.XX)
(13416.XX)
1976 - 2002 CJ - Wrangler
Installation Instructions

Note: All seats being installed in 1997 - 2002 Jeep® TJ Wranglers will require a seat adaptor bracket

Included components:

- (1) seat
- (1) Plastic cover (LH)
- (1) Plastic cover (RH)
- (1) Recliner knob
- (1) Air Pump with hose



Step (1) Firmly press plastic cover to the side of the metal seat recliner bracket for each side.

Step (2) Place recliner knob over recliner shaft and press firmly. Repeat for other side.

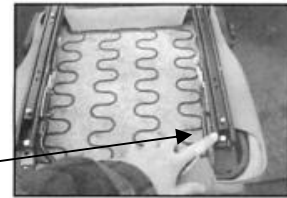
Step (3) Recheck to make sure covers and knobs are securely attached before installing seats.

Seat installation instructions:

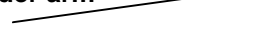
Step (4) Remove old seat from riser by removing 4 bolts. Save these bolts as they will be reused later.



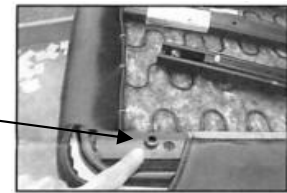
Step (5) Remove sliders from old seats by removing 4 bolts. Save these bolts as they will be reused later.



NOTE: To access the rear 2 bolts push slider arm down and move slider forward.



Step (6) Place sliders onto new seats. Reuse spacers from the old seat to align the slider.



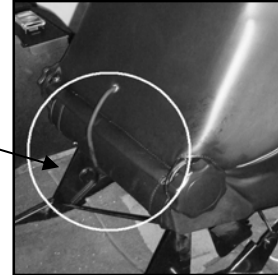
Step (7) Fasten slider to the new seat using the 4 bolts saved from step 5

Step (8) Carefully place slider back onto seat riser and fasten with 4 bolts saved from step 4

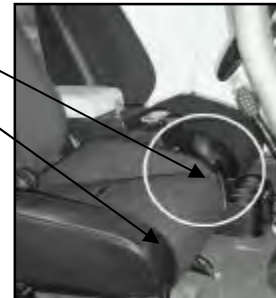




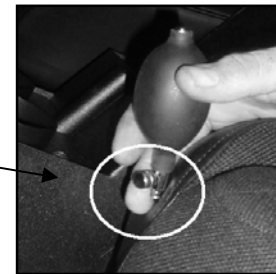
Step (9) With seat installed route the air hose and air pump under seat and to the front left or right corner of the seat.



Step(10) Velcro straps have been supplied on the left and right side of the seat so that the air pump can be mounted in relation to what side of the vehicle the seat has been mounted. For the drivers side it is recommended that it be placed on the right side of the seat (inboard). When attached to the passenger side it is suggested to use the left side of the seat. By locating the air pump to these spots you will not hit them when entering or exiting of the vehicle.



Step(11) Air is added to the lower lumbar support by closing the air valve screw and pumping the air bladder. (DO NOT OVER INFLATE). to release the air and to adjust for comfort simply unscrew air valve and bleed out air until the correct setting is found.



Note: This seat has been supplied with additional restraint slots added to seat. These slots are designed for the use most racing harnesses but some seat modification may be needed. It is the users responsibility to follow the seat belt manufactures installation instructions if installing a seat belt other than an OE design. The owner is responsible for proper placement of the shoulder harnesses.