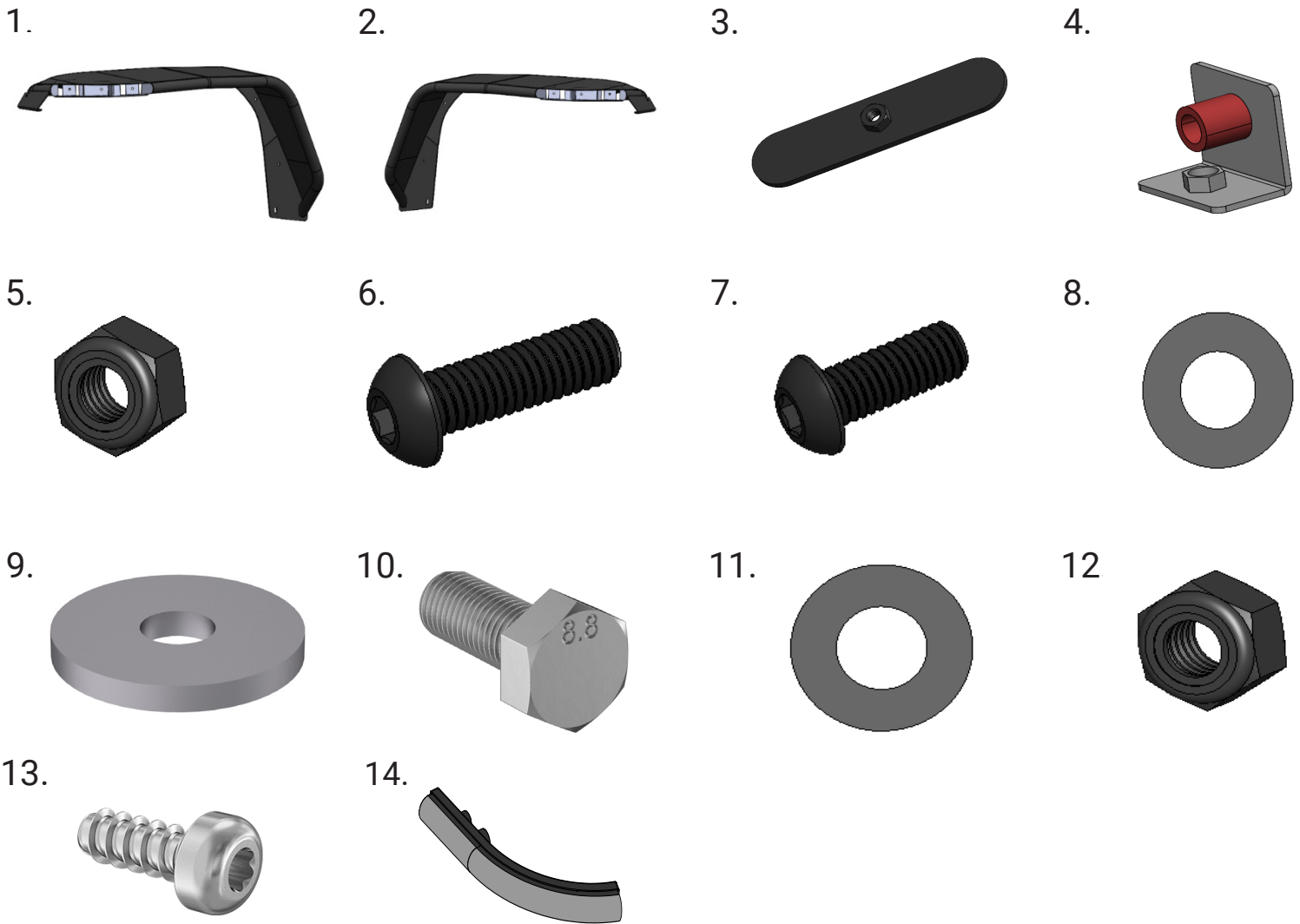


Part # 11641.13

Components and Hardware:



Components and Hardware:

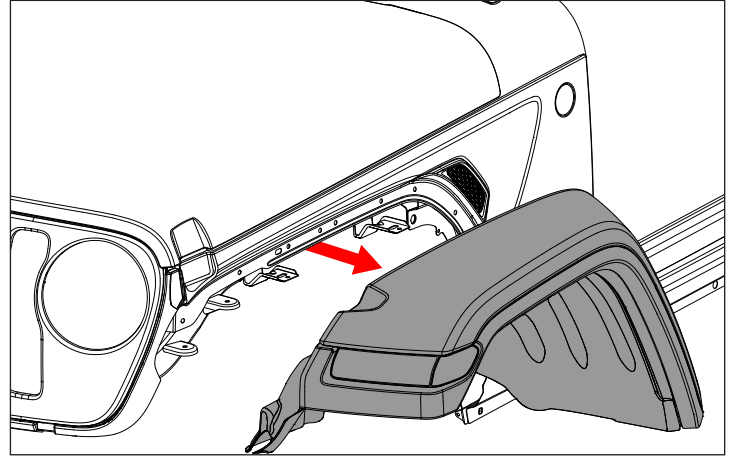
1. Left Tube Flare	(1)
2. Right Tube Flare	(1)
3. Nut Plate.....	(6)
4. Light Bracket	(4)
5. M6 Lock Nut.....	(6)
6. Long M6 Button Head Bolt (20mm)	(12)
7. Short Button Head Bolt (16mm)	(4)
8. M6 Washer	(22)
9. M6 Large O.D. Washer.....	(4)
10. M8 Hex Head Bolt (20mm)	(6)
11. M8 Washer	(12)
12. M8 Lock Nut.....	(6)
13. M6 Thread Forming Screw (25mm length).....	(4)
14. Running/Indicator Light.....	(2)

Tools for Installation:

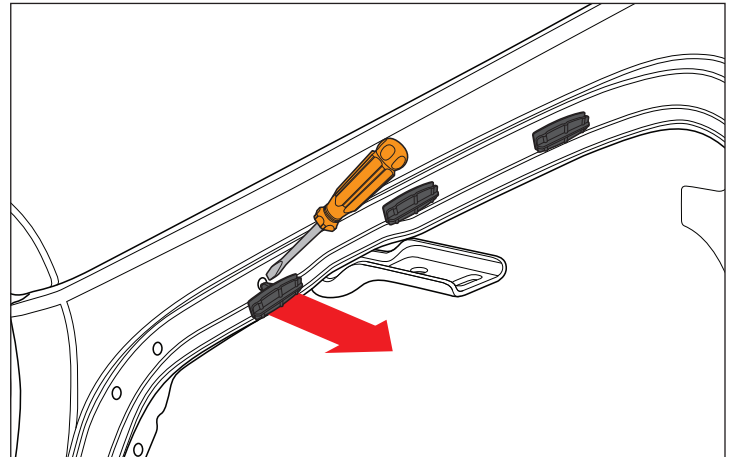
- 10mm Socket and Driver
- T25 Torx Bit
- Needle Nose Pliers
- Side Cutting Pliers
- Long Flat Head Screw Driver
- 13mm Socket and Driver
- No2 Phillips Head Screw Driver
- 4mm Allen Wrench Pry Tool

Metal Max Fender Flares, JL & JT

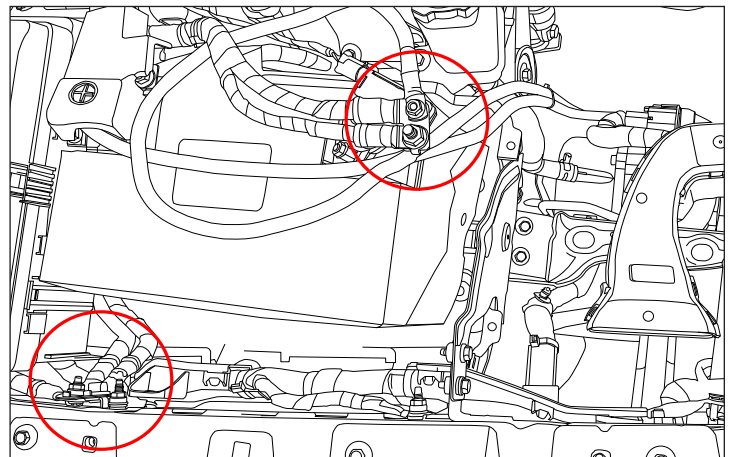
1. Remove front factory fender flares, flare supports, and wheel liner. Disconnect OE daytime running light (DRL) from wiring harness.



2. Using a clip removal tool or pry tool, remove any plastic clips still on fender. Thoroughly clean exposed fender.

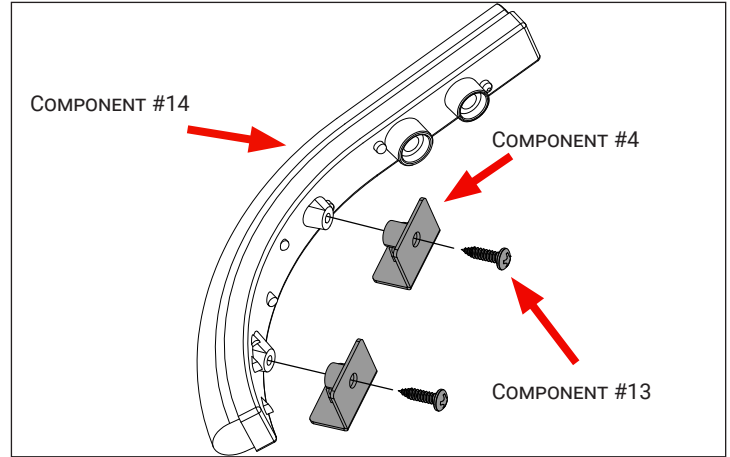


3. Disconnect primary and secondary batteries by removing wire leads from grounding post on fender and negative battery terminal.

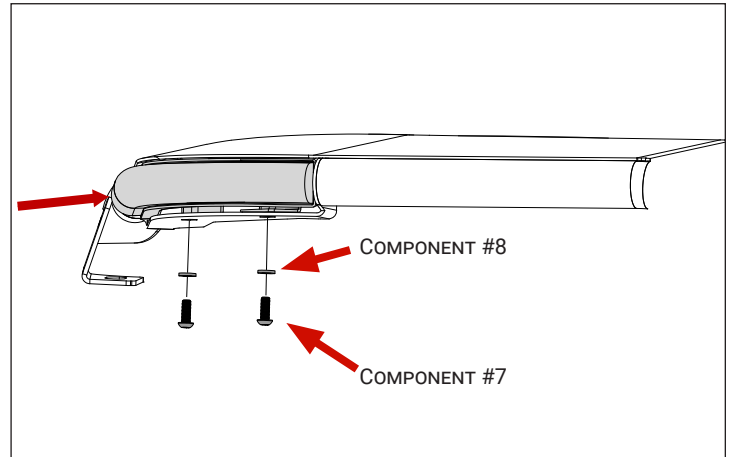


Metal Max Fender Flares, JL & JT

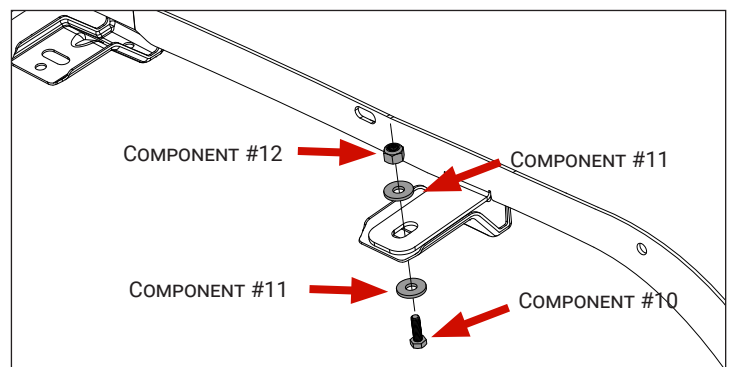
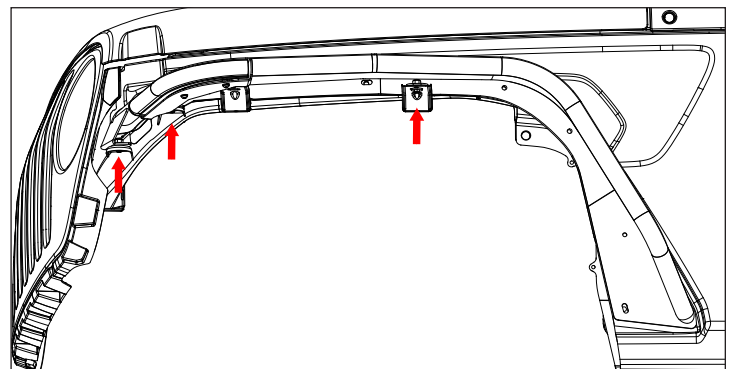
4. Using the supplied thread forming screw, attach the running/indicator light to the light brackets.



5. Position light and light brackets in the cutout in the flares. Using the supplied short button head bolt and M6 washers, loosely attach light brackets to tube flares.

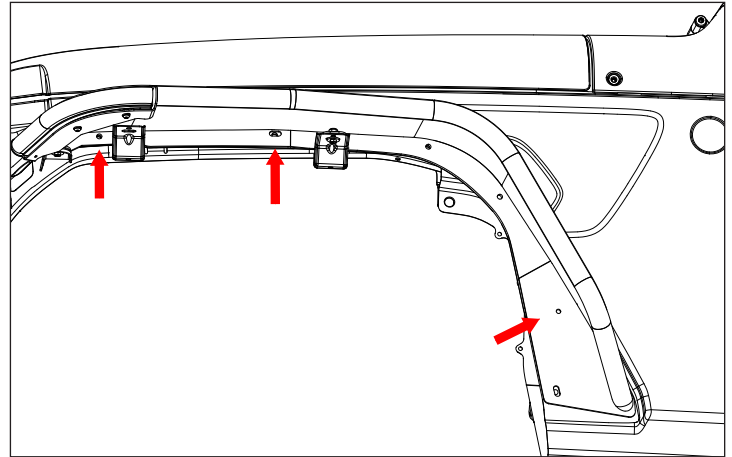


6. Position tube flare on vehicle. Using supplied M8 hardware, loosely attach flare to the OE mounting tabs.

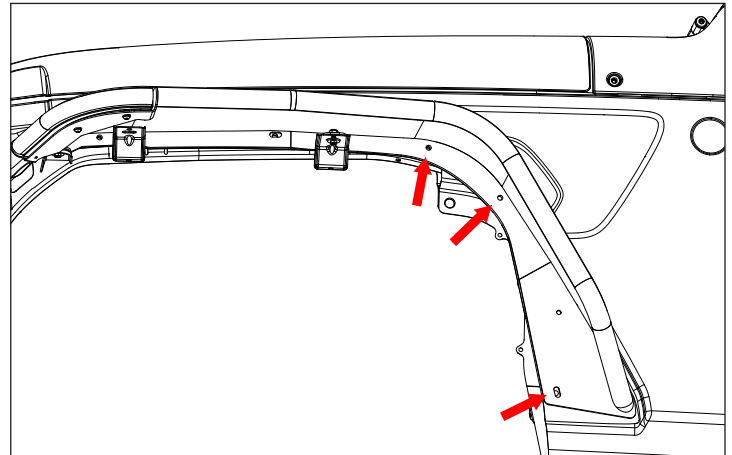


Metal Max Fender Flares, JL & JT

7. Using the nut plate(#3), M6 washer(#8), and long button head bolt(#6), loosely attach tube flare to vehicle.



8. Using M6 lock nut(#5), M6 Large O.D Washer(#9), long button head bolt(#6), loosely attach tube flare to vehicle.



9. Connect the wire harness for the running/indicator light to the OE plug. Zip tie wires and control box to fender taps. Tighten all hardware. Repeat this process on the opposite side. Reconnect primary and secondary batteries.

Note: Hyper flash or a DRL error may show on the dash after starting the vehicle. The vehicle's computer system should cycle any errors after a day or two of normal driving.

