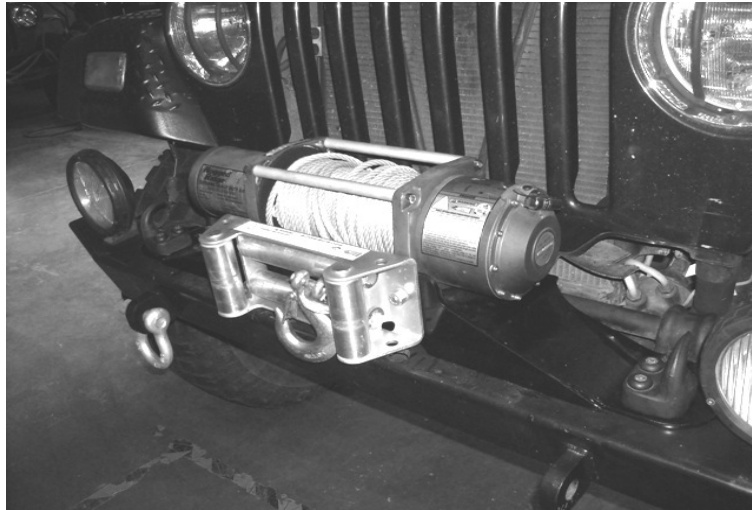




**YJ-TJ Raised Winch Mounting Plate
(p/n: 11238.12) 1987-2006 Wrangler**



Warning: This plate has been designed and built to offer years of trouble free operations but is only as safe as the individual that uses it. Please read all safety information and installation instructions pertaining to the winch that is to be installed prior to any operation. This plate has been designed to be used with most standard winch applications and is rated for use with standard bottom mount winches (**foot prints 10" x 4.5"**) up to 10500lbs pull rate. This plate can not be used with the Warn® M8274 series winches. This plate has been designed to reuse OE bumper attachment bolts that are at least grade 5 or better. It is recommended that if you are unsure of the grade of your bolts to please replace with new approved hardware. (Note: some Jeep® mounting bolts could be metric. In this case the bolts must be an 8.8 or numerically large in grade.

8.8 = grade 5, and 10.9 = grade 8

Please follow all safety procedures during any winching operation and never exceed the load rating of the winch. Never use the universal plate or winch in an unsafe manner and always keep individuals clear of winch cables when in use. The doubling and or tripling of the winch cable by use of snatch blocks can easily produce a load rating that is greater than both the winch and or the winch plate designed limits. Always use common sense when using your winch.

Parts List:

- (1) Raised Winch Plate
- (2) Spacer Plates.

Installation Instructions (11238.12)

1

Step 1: (YJ and TJ) Remove front bumper OE top mounting hardware (**retain – Do Not Discard**). If hardware has a rating of grade 5 (8.8metric) or higher retain. If you are unsure please replace with hardware of correct rating.

The grade rating of the bolt can be found on the bolt head. A grade 5 bolt will have three bars stamped or molded into the head where as a grade 8 bolts will have 6 bars. Metric bolts will have a numeric number embossed on the head.

This winch plate has been designed to be used with OE front bumpers. If this bumper is to be reused do not remove. If another aftermarket bumper is to be used remove the lower mounting bolts and **retain for use later**. Follow aftermarket bumper installation instructions.

This plate has been designed to work with most aftermarket bumper designs but modifications to some bumper may be required if fitment issues arise.

Step 2: (YJ-TJ) Remove the plastic frame cover from vehicle. Discard as they will not be used after the install of the winch plate. Of note, it might be necessary to remove any dirt/rust/debris from the mounting holes as it can accumulate and prevent the bolts from threading in properly.

Step 3: Install roller fairlead or hawse to winch plate. In some cases the winch size may require that the bolts be inserted from the back side with the nuts threaded from the front.

This will keep the bolt from hitting the winch when installed. In some extreme cases the amount of room needed between the front of the winch and the fairlead mounting surface will be too narrow to allow for a standard bolt (Warn 9.5ti for example). The use of a carriage bolt may be needed. If this carriage bolt is not supplied with the winch or fairlead then it can be found at most home improvement stores.

Step 4: In some applications it may be necessary to install the winch to the winch plate prior to placement onto the front frame. If this is necessary follow manufactures installation instructions and follow all safety steps provided. If enough space is available to reach the winch mounting holes located on winch plate after plate is mounted then skip this step until plate is mounted. The assistance of another person is recommended when lifting winch and winch plate assembly onto vehicle.

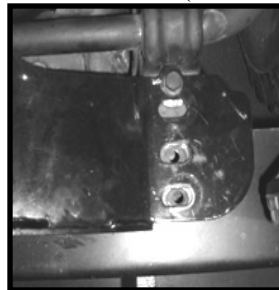
Step 5: (YJ's 1987-1995) Place winch plate over bumper (OE or Aftermarket) and align mounting holes. For YJ's you will use the first and third holes provided. If needed a spacer has been supplied for rear mounting points. It is to be used with aftermarket bumpers with a thickness greater than 1/8" thick. Install OE bolts and tighten. Of Note: If an aftermarket bumper is being used it might be necessary to loosen the bottom bolts in order to allow for more adjustment. The same will apply to the TJ

(TJ's 1997 – 2006) will use the first, second and fourth holes. For the TJ the front retaining bolt for the front sway bar will also need to be removed (hole 4). This bolt should be a grade 8 or 10.9 and will be reused. Place winch plate over frame and reinstall OE bolts and tighten. If needed a spacer has been supplied to be used with aftermarket bumpers with a thickness greater than 1/8" thick. **(See images below for reference)**

Use spacer if needed (TJ shown)



Reinstall rear bolt (TJ shown)



Reinstall OE hardware (TJ shown)



Step 6: If not done earlier install winch. Follow manufactures instructions and follow all safety steps provided.